

Nullifire



FS704 FIRE RESISTANT HYBRID SEALANT

TECHNICAL HANDBOOK



INTELLIGENT ENGINEERED PASSIVE FIRE PROTECTION

We are specialists, with one focus that has not and will not change – to protect people and buildings from fire. For 50 years, Nullifire has been a market leader in the Passive Fire Protection industry.

We pride ourselves for being the only manufacturer offering intumescent and fire stopping solutions.

Passive fire protection is highly complex but crucially important, especially as buildings become more sophisticated. At Nullifire, we understand the need to have confidence in fire protection; so, we provide systems that perform when they are called upon.

With a unique team of technical experts, everything is focused on providing what our customers need at every stage of their project – smart protection.

Nullifire is a brand of Tremco CPG, Construction Products Group, a European manufacturer and service provider of high performance building materials.

Introduction

2 Intelligent Engineered Passive Fire Protection

FS704 Fire resistant Hybrid

4 Technical product description
5 Walls \geq 100 mm - Vertical Linear Joints
9 Walls \geq 100 mm - Horizontal Linear Joints (Head of Wall)
12 Walls \geq 100 mm - Horizontal Linear Joints
13 Floors \geq 150 mm - Horizontal Linear Joints

General information

16 Testing & Certification
17 Tremco CPG and Trusted Brands
20 Large Cavity Barriers

ASSISTANCE WHEN REQUIRED

Our targeted approach allows you to access answers to all of your questions - quickly, simply and for at any stage of the design, build and installation process.

Regardless of the complexity of a project, you can turn to the team here at Nullifire. Our trained expert team support architects, specifiers, main contractors and installers in product selection, specification writing and industry best practices. Involving us at the early stages of a project can help you save money and time, as well as the assurance that the products selected are fully compatible and ideal for the job at hand.

Whilst choosing the right product is vitally important, the application is equally as critical. To optimise this process, we are able to supply the field teams data on formulations, installation specifications and technical drawings to ensure the correct application of our products. Bespoke manuals and instructions can be prepared by our technical teams for specific situations.

Our extensive online and face-to-face training ensures Nullifire products are applied professionally and efficiently, whilst giving installers and contractors access to new technologies and solutions.

All of our product data sheets, technical notes and additional product information can be downloaded from www.nullifire.com.

Contact our
Technical
department



FS704

Fire Resistant Hybrid Sealant

FS704 is a non-sagging fire resistant sealant with excellent processing properties. Based on hybrid polymers, FS704 is a paintable elastic sealant free of phthalated, isocyanates and silicone. In a reaction with humidity from the air it forms a soft elastic sealant that shows good resistance to light, ageing and weathering.



Key Benefits Summary

- Up to 2 hours fire resistance Tested to EN 1366-4
- Up to 25% movement capability normal usage in building, not during fire
- Suitable for flexible walls and rigid walls
- Can be painted if required
- Tested for smoke leakage
- Acoustic rating: 66 dB
- Air permeability: airtight up to 600 Pa

Information in tables

Fire performance in accordance with EN1366-4 testing.

Key to abbreviations: E = Integrity
I = Insulation
W = Joint width range

Orientation: H = Horizontal supporting construction
V = Vertical supporting construction- vertical joint
T = Vertical supporting construction- horizontal joint

Movement capability: X = No movement

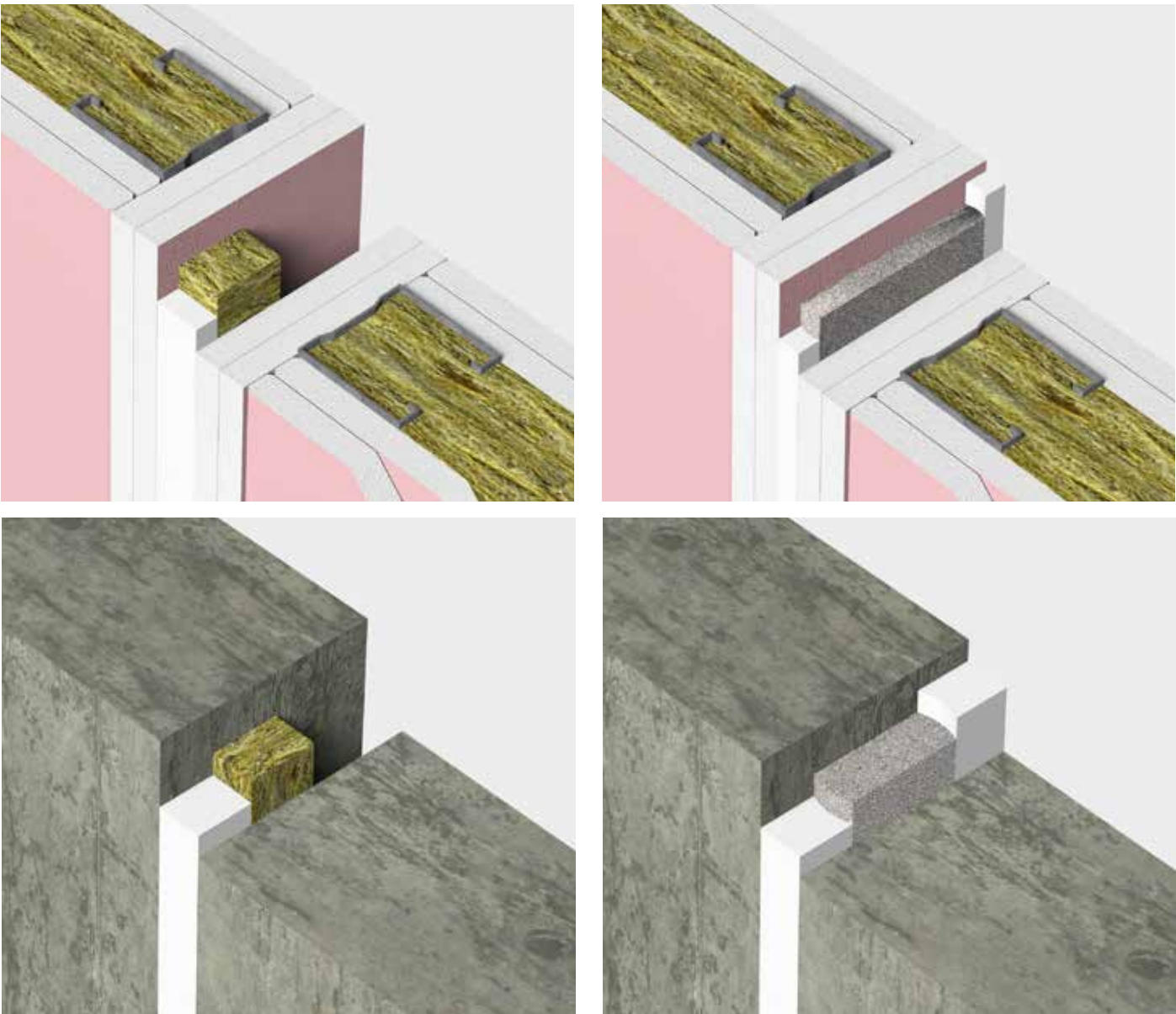
Density of materials

- Concrete wall : $\geq 2400 \pm 200 \text{ kg/m}^3$
- Masonry wall (Concrete Block or ACC Block) : $\geq 350 \text{ kg/m}^3$
- Timber wood : $\geq 450 \text{ kg/m}^3$

Depth of rock fibre backer

- W 05- 20 : 40 mm depth
- W 21- 50 : 50 mm depth

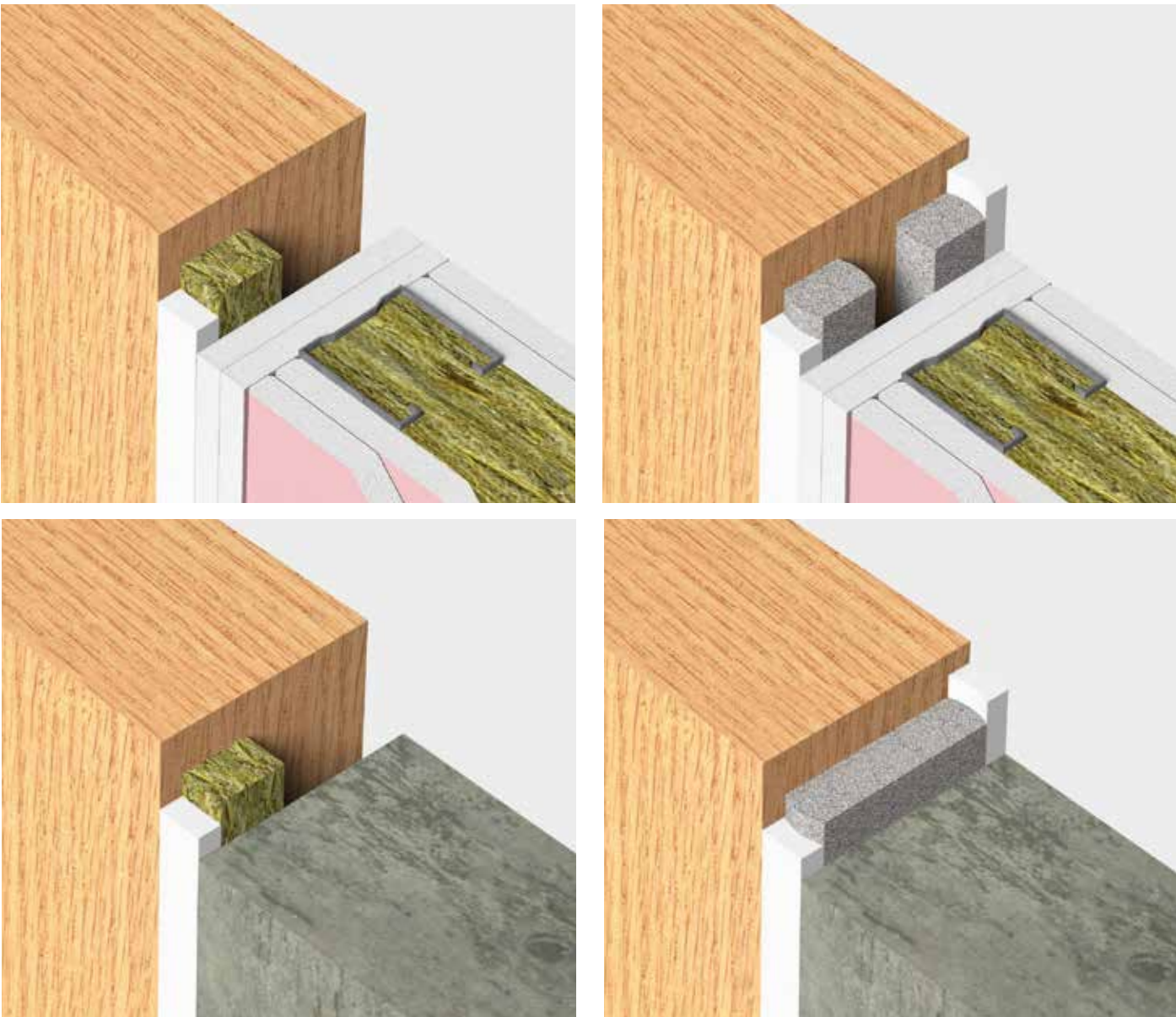
WALLS $\geq 100 \text{ MM}$ - VERTICAL LINEAR JOINTS



Substrate	Backing Material	Sealant Installation	Sealant Depth (mm)	Classification	Application and usage	Gap width range
Drywall - Drywall	Rock fibre 33 kg/m ³	Fire side	25	EI 60	V- X- B	W 05- 50
Drywall - Drywall	PE/PU	Both sides	10	EI 60	V- X- B	W 05- 20
Drywall - Drywall	PE/PU	Both sides	2:1	EI 60	V- X- B	W 20- 50

All results for drywalls are also valid for concrete and masonry walls.
2:1 = ratio of width to depth of the sealant.

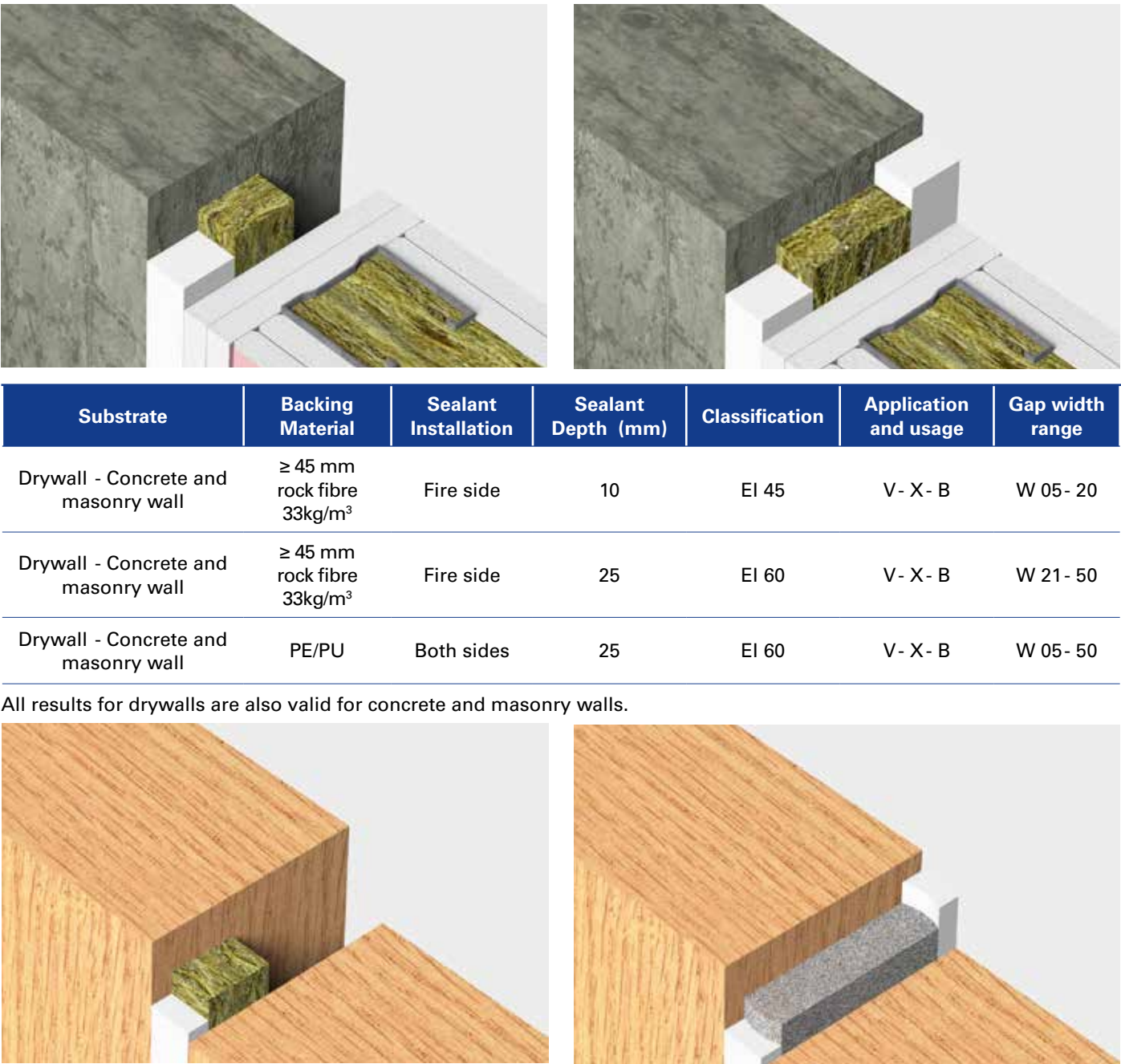
WALLS ≥ 100 MM -
VERTICAL LINEAR JOINTS



Substrate	Backing Material	Sealant Installation	Sealant Depth (mm)	Classification	Application and usage	Gap width range
Drywall - Timber wall	≥ 45 mm rock fibre 33kg/m³	Fire side	25	EI 60	V - X - B	W 05- 50
Drywall - Timber wall	PE/PU	Both sides	10	EI 60	V - X - B	W 05- 20
Drywall - Timber wall	PE/PU	Both sides	2:1	EI 60	V - X - B	W 20- 50

All results for drywalls are also valid for concrete and masonry walls.
2:1 = ratio of width to depth of the sealant.

WALLS ≥ 100 MM -
VERTICAL LINEAR JOINTS

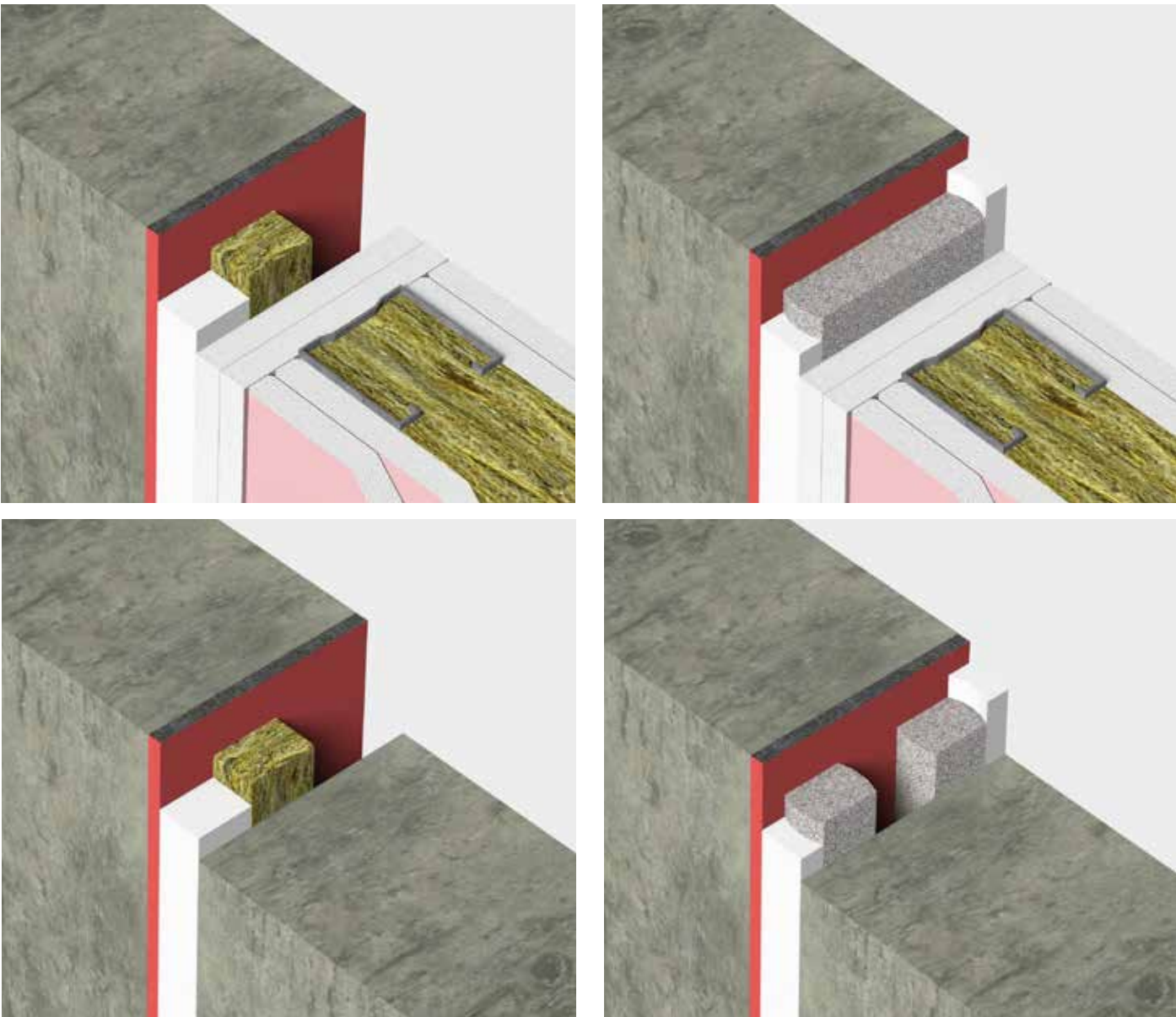


Substrate	Backing Material	Sealant Installation	Sealant Depth (mm)	Classification	Application and usage	Gap width range
Drywall - Concrete and masonry wall	≥ 45 mm rock fibre 33kg/m³	Fire side	10	EI 45	V - X - B	W 05- 20
Drywall - Concrete and masonry wall	≥ 45 mm rock fibre 33kg/m³	Fire side	25	EI 60	V - X - B	W 21- 50
Drywall - Concrete and masonry wall	PE/PU	Both sides	25	EI 60	V - X - B	W 05- 50

All results for drywalls are also valid for concrete and masonry walls.

Substrate	Backing Material	Sealant Installation	Sealant Depth (mm)	Classification	Application and usage	Gap width range
Timber wall - Timber wall	≥ 45 mm rock fibre 33kg/m³	Fire sides	25	EI 60	V - X - B	W 05- 50
Timber wall - Timber wall	PE/PU	Both sides	10	EI 60	V - X - B	W 05- 20
Timber wall - Timber wall	PE/PU	Both sides	25	EI 60	V - X - B	W 20- 50

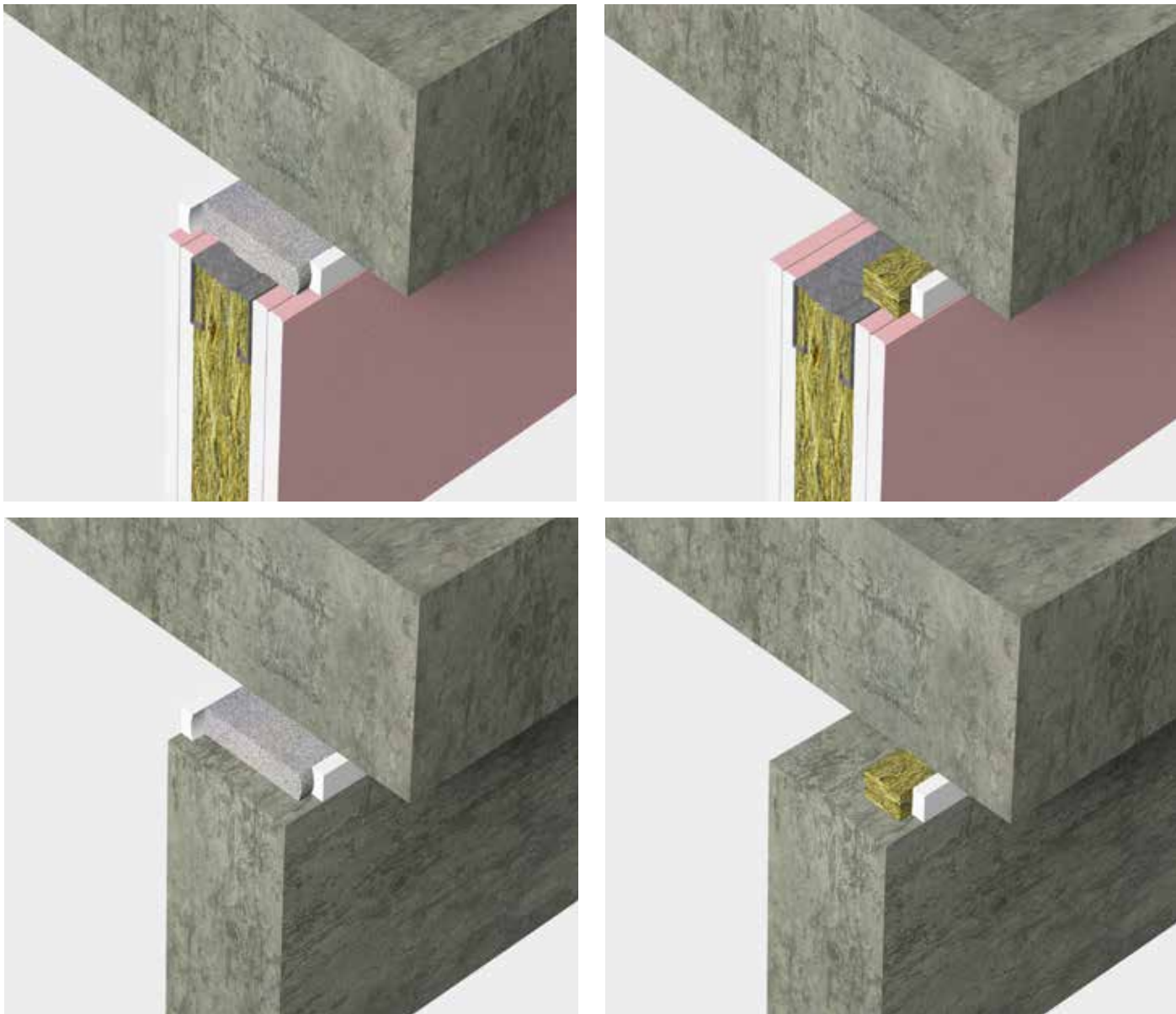
WALLS ≥ 100 MM -
VERTICAL LINEAR JOINTS



Substrate	Backing Material	Sealant Installation	Sealant Depth (mm)	Classification	Application and usage	Gap width range
Drywall - Steel	≥ 45 mm rock fibre 33kg/m³	Fire side	25	EI 45	V – X - B	W 20 - 50
Drywall - Steel	PE/PU	Both sides	25	EI 45	V – X - B	W 05 - 50

All results for drywalls are also valid for concrete and masonry walls.

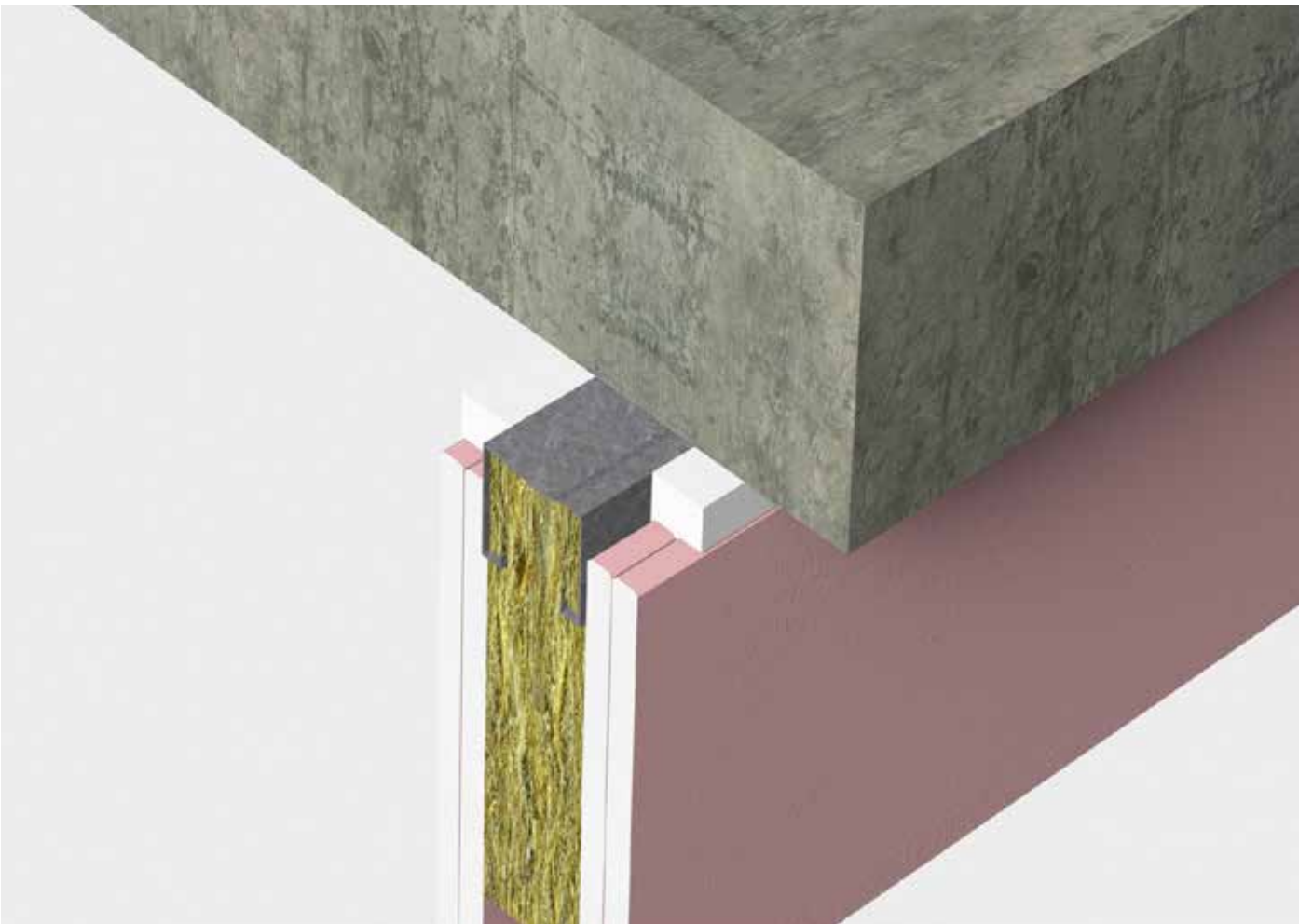
WALLS ≥ 100 MM -
HORIZONTAL LINEAR JOINTS (HEAD OF WALL)



Substrate	Backing Material	Sealant Installation	Sealant Depth (mm)	Classification	Application and usage	Gap width range
Drywall - Rigid floor	PE/PU	Both sides	10	EI 120	T - X - B	W 05 - 20
Drywall - Rigid floor	PE/PU	Both sides	2:1	EI 60	T - X - B	W 20 - 50
Drywall - Rigid floor	≥ 45 mm rock fibre 33kg/m³	Fire side	10	EI 60	T - X - B	W 05 - 20
Drywall - Rigid floor	≥ 45 mm rock fibre 33kg/m³	Fire side	2:1	EI 90	T - X - B	W 05 - 50

All results for drywalls are also valid for concrete and masonry walls.
2:1 = ratio of width to depth of the sealant/

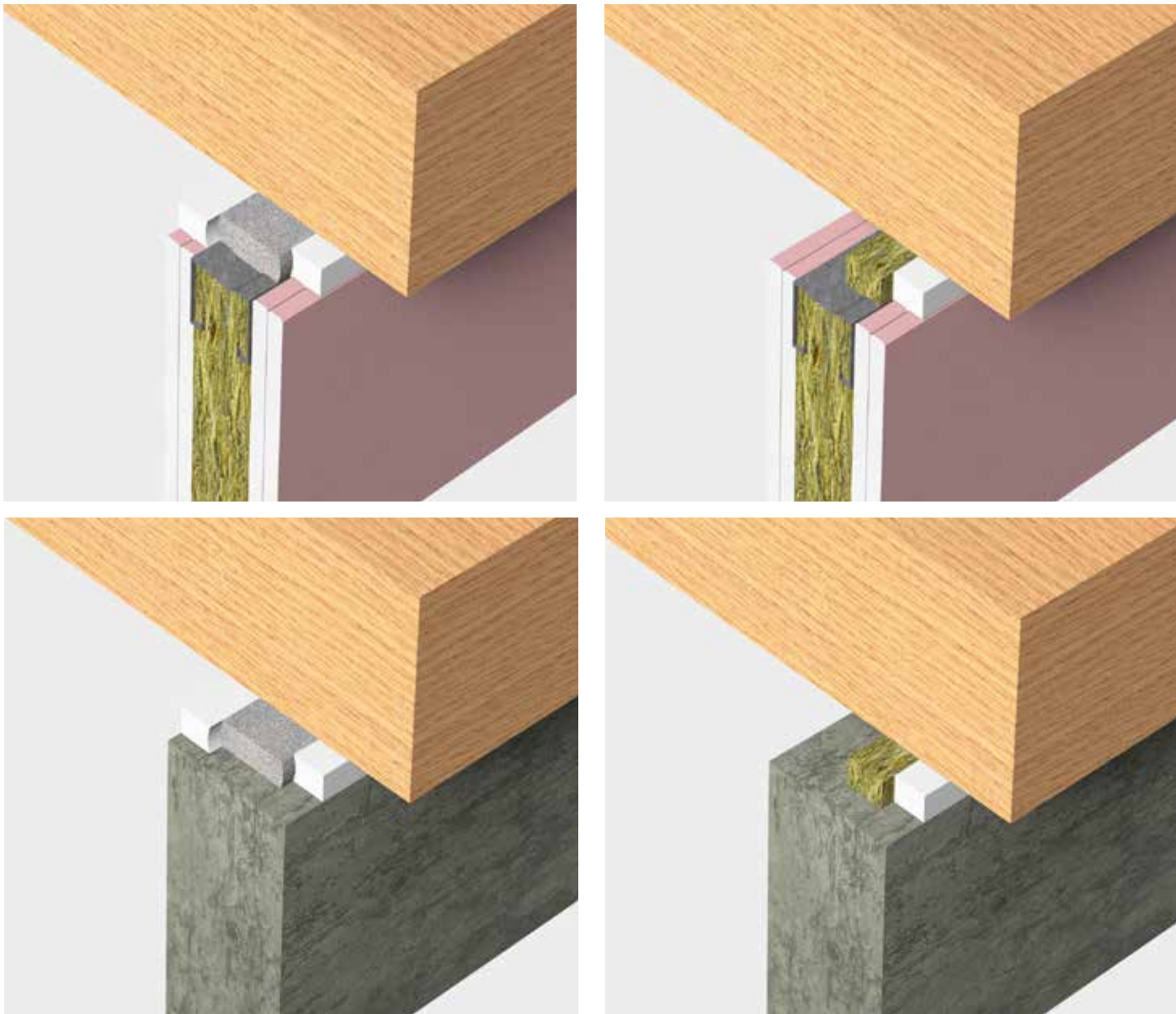
WALLS ≥ 100 MM -
HORIZONTAL LINEAR JOINTS (HEAD OF WALL)



Substrate	Backing Material	Sealant Installation	Sealant Depth (mm)	Classification	Application and usage	Gap width range
Drywall - Rigid floor	None	Both sides*	25	EI 120	T- X- B	W 05- 20

All results for drywalls are also valid for concrete and masonry walls.
*No backer, application direct on metal head track.

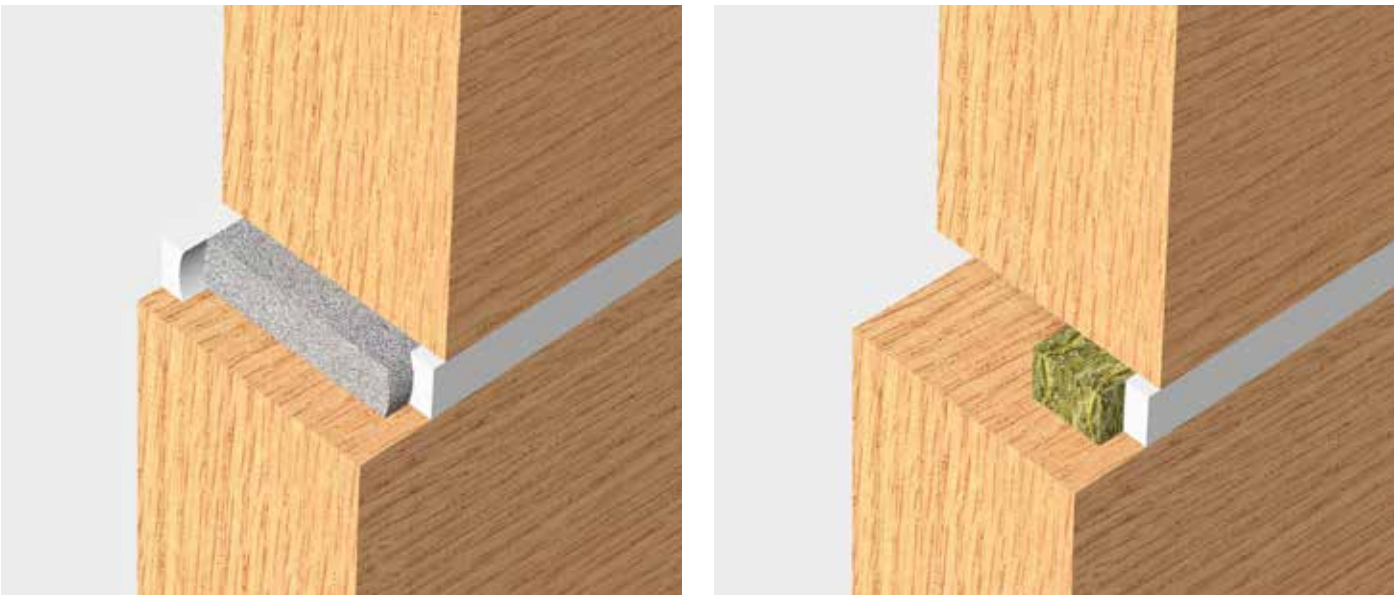
WALLS ≥ 100 MM -
HORIZONTAL LINEAR JOINTS (HEAD OF WALL)



Substrate	Backing Material	Sealant Installation	Sealant Depth (mm)	Classification	Application and usage	Gap width range
Drywall - Timber floor	PE/PU	Both sides	25	EI 60	T- X- B	W 00- 50
Drywall - Timber floor	≥ 45 mm rock fibre 33kg/m³	Fire side	25	EI 60	T- X- B	W 05- 50
Drywall - Timber floor	≥ 45 mm rock fibre 33kg/m³	Fire side	10	EI 45	T- X- B	W 05- 20

All results for drywalls are also valid for concrete and masonry walls.

WALLS ≥ 100 MM -
HORIZONTAL LINEAR JOINTS



Substrate	Backing Material	Sealant Installation	Sealant Depth (mm)	Classification	Application and usage	Gap width range
Timber wall - Timber wall	PE/PU	Both sides	10	EI 60	T- X- B	W 05- 20
Timber wall - Timber wall	PE/PU	Both sides	2:1	EI 60	T- X- B	W 20- 50
Timber wall - Timber wall	≥ 45 mm rock fibre 33kg/m³	Fire side	10	EI 60	T- X- B	W 05- 20
Timber wall - Timber wall	≥ 45 mm rock fibre 33kg/m³	Fire side	2:1	EI 60	T- X- B	W 20- 50

2:1 = ratio of width to depth of the sealant

FLOORS ≥ 150 MM -
HORIZONTAL LINEAR JOINTS



Substrate	Backing Material	Sealant Installation	Sealant Depth (mm)	Classification	Application and usage	Gap width range
Rigid floor - Rigid floor	PE/PU	Top side	10	EI 90	H- X- B	W 05- 20
Rigid floor - Rigid floor	PE/PU	Top side	2:1	EI 60	H- X- B	W 20- 50
Rigid floor - Rigid floor	PE/PU	Both sides	10	EI 120	H- X- B	W 05- 20
Rigid floor - Rigid floor	PE/PU	Both sides	2:1	EI 90	H- X- B	W 20- 50

PE/PU backing material can always be replaced by Rock fibre 33 kg/m³
2:1 = ratio of width to depth of the sealant



Substrate	Backing Material	Sealant Installation	Sealant Depth (mm)	Classification	Application and usage	Gap width range
Rigid floor - Rigid wall	None	Top side	min. 10 x 10 (triangle)*	EI 120	H- X- B	W 01- 05

* Smoothed at 45 degrees.

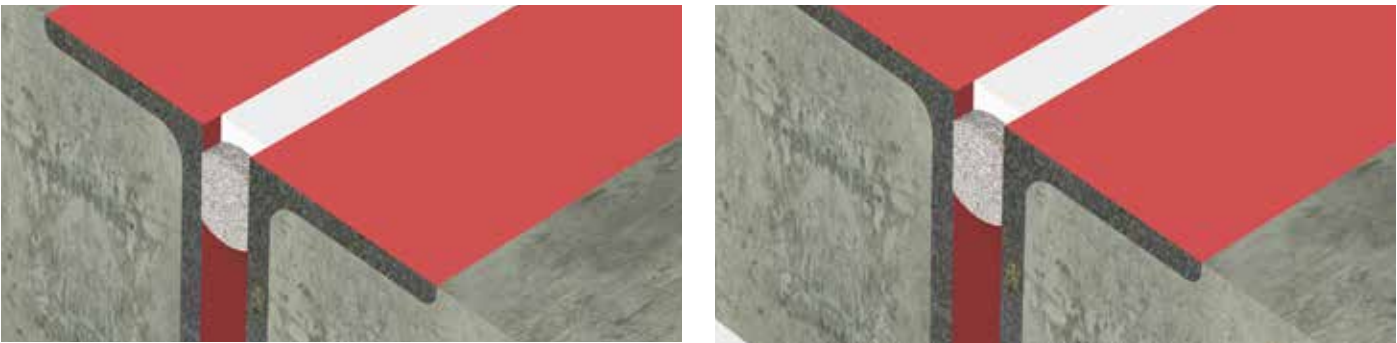
FLOORS ≥ 150 MM -
HORIZONTAL LINEAR JOINTS



Substrate	Backing Material	Sealant Installation	Sealant Depth (mm)	Classification	Application and usage	Gap width range
Rigid floor - Timber floor	PE/PU	Top side	10	EI 90	H- X- B	W 05- 20
Rigid floor - Timber floor	PE/PU	Top side	2:1	EI 60	H- X- B	W 20- 50
Rigid floor - Timber floor	PE/PU	Both sides	10	EI 90	H- X- B	W 05- 20
Rigid floor - Timber floor	PE/PU	Both sides	2:1	EI 60	H- X- B	W 20- 50

PE/PU backing material can always be replaced by Rock fibre 33 kg/m³.
2:1 = ratio of width to depth of the sealant.

FLOORS ≥ 150 MM -
HORIZONTAL LINEAR JOINTS



Substrate	Backing Material	Sealant Installation	Sealant Depth (mm)	Classification	Application and usage	Gap width range
Corner Steel - Corner Steel	PE/PU	Top side	10	EI 60	H- X- B	W 05- 20
Corner Steel - Corner Steel	PE/PU	Top side	2:1	EI 30	H- X- B	W 20- 50
Corner Steel - Corner Steel	PE/PU	Both sides	10	EI 120	H- X- B	W 05- 20
Corner Steel - Corner Steel	PE/PU	Both sides	2:1	EI 45	H- X- B	W 20- 50

PE/PU backing material can always be replaced by Rock fibre 33 kg/m³.
2:1 = ratio of width to depth of the sealant.



Substrate	Backing Material	Sealant Installation	Sealant Depth (mm)	Classification	Application and usage	Gap width range
Corner Steel - Concrete	PE/PU	Top side	10	EI 30	H- X- B	W 05- 20
Corner Steel - Concrete	PE/PU	Top side	2:1	EI 30	H- X- B	W 20- 50
Corner Steel - Concrete	PE/PU	Both sides	10	EI 120	H- X- B	W 05- 20
Corner Steel - Concrete	PE/PU	Both sides	2:1	EI 45	H- X- B	W 20- 50

PE/PU backing material can always be replaced by Rock fibre 33 kg/m³.
2:1 = ratio of width to depth of the sealant.

Permissible orientationThe linear joint caulking can be implemented in a horizontal construction or horizontally in a vertical construction

TESTING & CERTIFICATION

Able to assist with a comprehensive selection of passive fire protection products, Nullifire's product portfolio gives architects, specifiers, and contractors the ability to achieve fire protection requirements within any building structure.

Working closely with our in-house technical team, 3rd party accredited installers can deliver the best possible and most cost-effective fire protection solution, without compromising on quality or safety.

As the sole manufacturer to offer both intumescent coatings and fire stopping products, we are uniquely positioned to offer a full package to suit all project requirements. Nullifire's passive fire protection products, in combination with technical support and expert advice, gives all parties peace of mind and assurance of local building code compliance.

Our passive fire protection products undergo initial validation assessments at our in-house facilities prior to undergoing rigorous independent 3rd party testing and certification.



Delivering World-Class Construction Product Solutions.

The product brands housed within Tremco CPG Europe cover a wide array of different construction needs and provide a wealth of complex services, support and systems that are rarely found together under one roof.



Sealing, bonding & insulation

Window Insulation, Façade Construction, Exterior Insulation & EIFS, Structural & Inplant Glazing, Insulated Concrete Forms (ICFs)



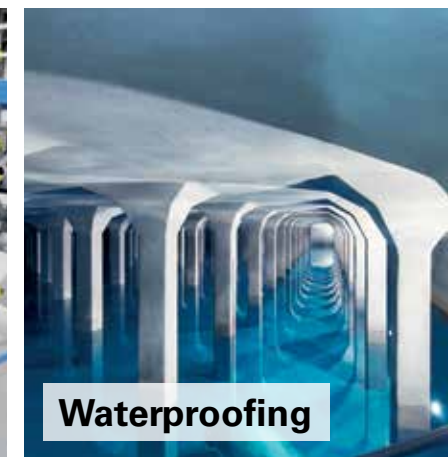
Passive Fire Protection

Fire Stopping for Service Penetrations, Linear Joints and Ventilated Cavity Barriers



Flooring

Seamless Resin Flooring, Subfloor Preparation, Car Parking Structures



Waterproofing

Bridge Decks, Infrastructure, Potable & Waste Water Industry, Balconies, Terraces, Basements & Foundations.



Roofing

Liquid Applied Systems, Felt Systems, Vegetated Roofing

Europe's leading construction products brands...



For more information or to
download our Technical Data
Sheets, scan the QR code or visit:
www.nullifire.com



Tremco CPG UK Limited
Coupland Road
Hindley Green
WN2 4HT, UK

T : +44 (0) 1942 251400
hello@tremcocpg.com
www.tremcocpg.eu